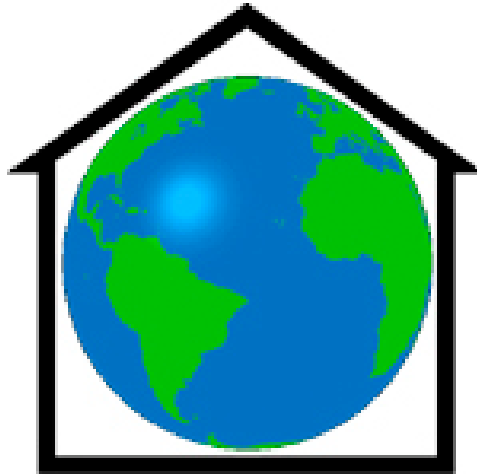


Link House Trust



'a home from home for international graduate students'

- A home from home for key people in tomorrow's world
 - For International Understanding
 - For Friendship and Support

Annual Report 2008

Chairman's report for 2008

2008 marked the twentieth anniversary of the opening of the first Link House in Gilbert Road, Cambridge. This was celebrated with a service in the Chapel at St Edmunds College at the end of August. Past and present wardens, assistant wardens and trustees took part, and a very encouraging address was given by Bishop John Taylor, one of our Patrons. This was followed by tea and a specially made cake on one of the few sunny days of the whole summer.

As well as looking back we have also been looking forward to the future. After rather tortuous negotiations, contracts were signed just before Christmas for an exchange of our house in Gilbert Road, which was in need of substantial building work, for St Leonards, a small house adjacent to our East Hertford Street property. We hope to begin demolition and re-building very shortly on this site. This will give us a purpose-built accommodation for 12 students and bring all the Link House family together on one site, facilitating general management and participation in joint activities. The Trustees are extremely grateful to John Cooper, who not only drew up the outline plans for the new house but has masterminded long and complex negotiations with contractors, solicitors and the City Council. We have a loan of £500,000 promised from the charitable trust that has supported us in the past: major fund raising will be required to repay this.

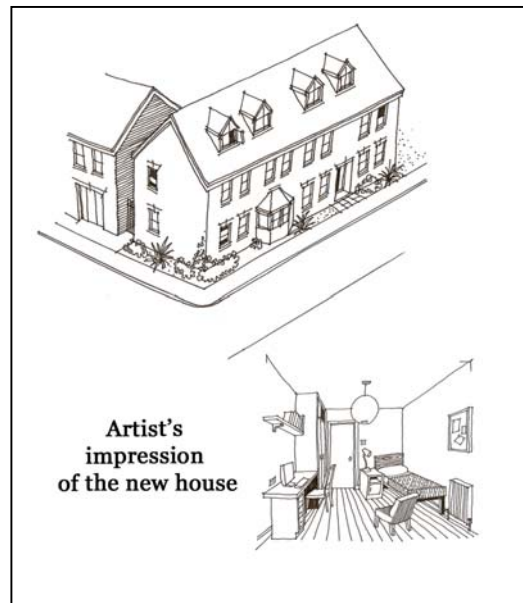
Most of the existing Gilbert Road residents were due to move on in the summer anyway, but these changes have inevitably caused extra work and disruption for our warden team (with more to come!), and we thank them for their tolerance and flexibility. Gugu and Lizzy Motshwene and Lindo have moved into East Hertford Street as Assistant Wardens, while Tony Evans has moved back into Chesterton Road. The warden team was strengthened in September with the birth of Hannah Grace to Martin and Nic. She has definitely made her mark on the house! Helen Blake, our admin assistant, has been able to increase her hours during Nic's maternity leave and has made a great contribution to many aspects of life at Link House outside her prescribed duties.

The Trustees continue to meet on a quarterly basis: we are also variously involved in praying regularly together, teaching English and supporting students, and joining in residents' activities. We congratulate Jenifer Cooper on her richly deserved MBE, awarded for services to international students in the New Years Honours. After faithful service dating back to the very beginning of the Trust, Elizabeth Catherwood has decided to step down as a trustee. We shall miss her wisdom, but are delighted she has agreed to remain involved with Link House as a patron. We are very pleased to welcome Angela Palmer, a long time supporter now resident in Cambridge, as a new Trustee. I had previously decided to resign as Chair after 3 years in December 2008: we will now have a rotating Chair for each meeting. I would like to thank all our Patrons, Trustees, Wardens and friends for their support and hard work over the last year. *Chris Gaston*

Looking ahead...

- **New Build Project**

The building of the new house, adjacent to the East Hertford Street house, will be the main project of 2009. It is hoped that this house will open in January 2010 accommodating 12 students.



- **Fund Raising**

Inevitably the new build project requires a significant level of new fund raising initiatives and we will be busy pursuing these over the coming year.

- **Supporting residents and building relationships**

We are keen that the day-to-day work of supporting residents does not get forgotten in the busy-ness of the new build and fundraising and we are continuing to encourage friends of Link House to consider ways in which they can practically be involved. Could you consider some English conversation practice? Providing Sunday Lunch? Proof reading work?

Finance and business situation

Preliminary financial summary

<u>Income:</u>	£
Rents	100,538
Donations and Tax Rebate	30,259
Bank Interest	2,974
	<hr/>
Total	133,771

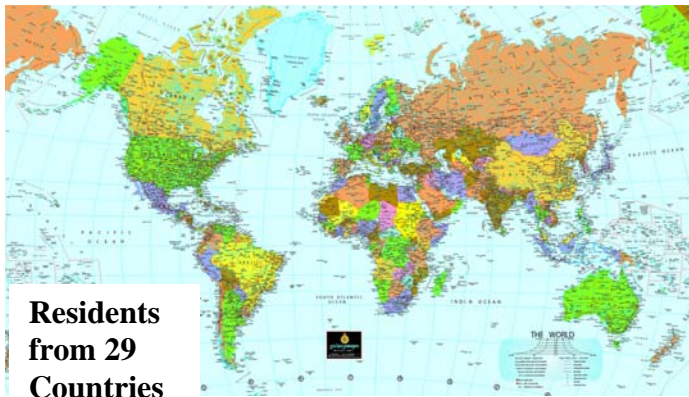
<u>Expenses:</u>	£
Administration	47,988
Accommodation	54,769
Building fund	19,131
	<hr/>
Total	121,888

<u>Funds Held:</u>	£
Operations	12,909
Building	15,098
Bursary	12,341
Contingency	59,306

Full accounts available upon request subject to auditing.

'A home from home for key people in tomorrow's world'

In 2008 Link House has supported:

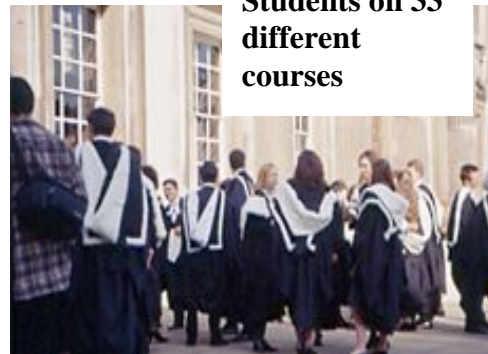


**Residents
from 29
Countries**

*'I will remember
Link House as a
very diverse,
friendly and
reliable place
which offered both
privacy and
community, peace
and entertainment'*



**54 Students, 23
Spouses and 3
Children**



**Students on 33
different
courses**



**Students at
17 Colleges**

‘For friendship and support’

We continue to offer friendship and support to residents in a number of ways. This has been a busy year continuing many Link House traditions as well as developing new events and groups.

Meals Together

We have found that getting people together over a meal is a popular way to bring the houses together and develop relationships. We hold these meals each month and they are a great opportunity for residents, wardens and trustees to spend time together.

Film Nights

These have continued on a monthly basis and we’ve shown a range of films from *The Kite Runner* to *Shrek*. We continue to show *The Passion of the Christ* on Good Friday as a thought provoking film helping to focus on the message of Easter.

Days out

Days out to London and to the Seaside have proven to be popular this year. A summer trip to the seaside was a well attended day out despite the typical English weather! Residents enjoyed traditional seaside entertainments of crazy golf and, of course, fish and chips! A trip to London took in the major sights with a walking tour led by Martin as well as an opportunity to see the Christmas lights.



‘Thank you so much for the warmth and welcome when I needed it the most. Indeed I was able to achieve my dream of a qualification through the unreserved kindness of Link House’

Celebrating major festivals

We celebrate the major Christian festivals of Easter and Christmas with events such as meals together and opportunities to go to church and hear the meaning behind the festival.

We looked at the meaning of Advent and Christmas with a gathering every Advent Sunday. This enabled us to focus each Sunday on the meaning behind Advent, introduce some Christmas carols and, of course, eat mince pies!

Christmas saw 20 people come together for a traditional Christmas lunch. We also had a great time decorating the houses and preparing traditional Christmas food together.

'Being part of Link House gave me not only an opportunity to experience the traditions of Christmas but also an insight into true meaning and spirit of Christmas'



'Christmas 2008 and Link House will remain for me as one of the best memories and experiences which I will remember and talk about forever'



Link Houses: 17/19 Chesterton Road, Cambridge CB4 3AL
Tel: 01223 561202
Wardens: Martin and Nicola Smith.
Assistant Warden: Tony Evans

7 East Hertford Street, Cambridge CB4 3AJ
Tel: 01223 311366
Assistant Wardens: Gugu and Lizzy Motshwene

Email: wardens@linkhoustrust.com

Website: www.linkhoustrust.com

Trustees: - Jenifer Cooper MBE, Chris Gaston (Chair for 2008), Elizabeth How (Treasurer), Prof Colin Humphreys CBE, David Jones OBE, Angela Palmer, Shirley Scott

Patrons: Lord Anderson, Sir Fred and Lady Elizabeth Catherwood, Prof Sir Brian Heap CBE FRS, The Revd Dr John Polkinghorne KBE FRS, The Rt Revd John Taylor KCVO, Prof Hugh Williamson DD FBA

Registered Charity No. 296226